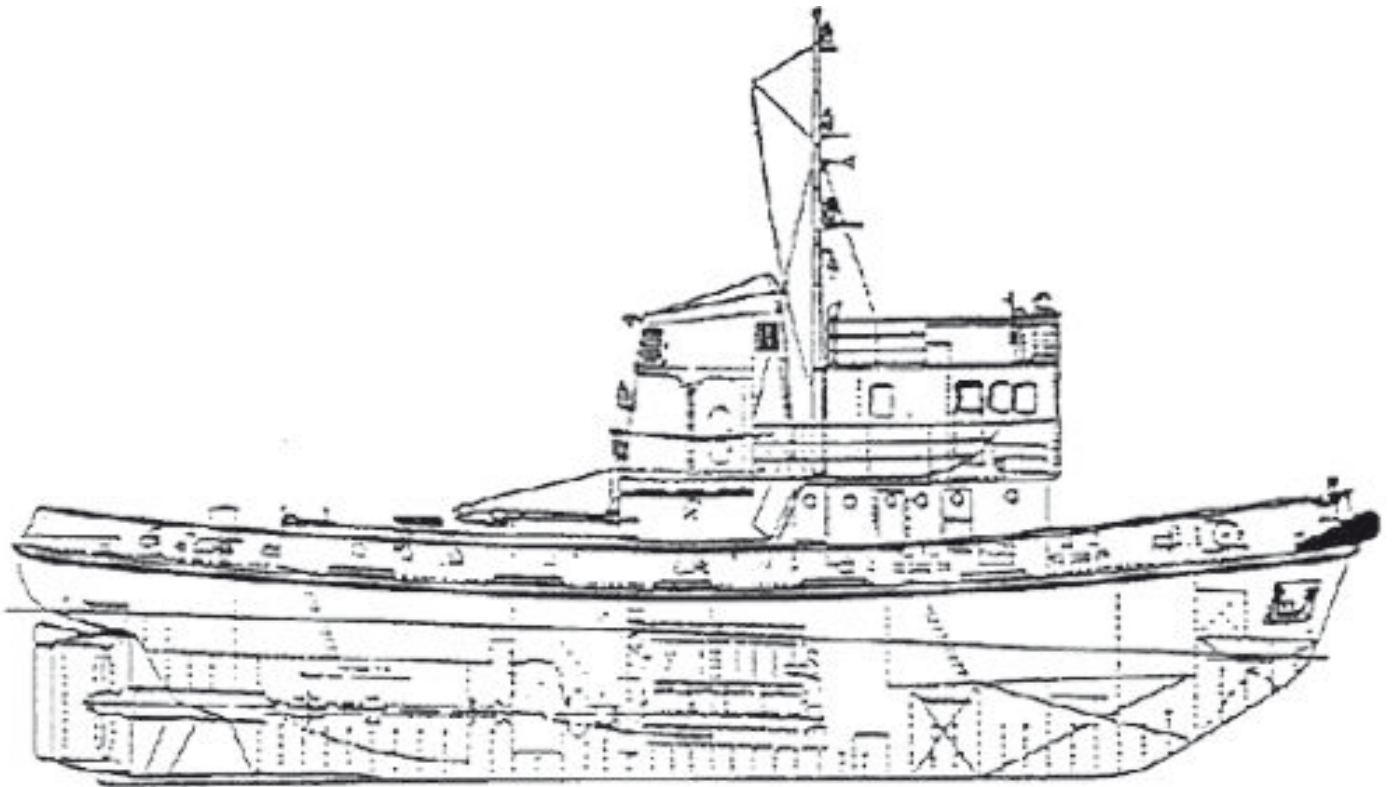




EMS OFFSHORE SERVICE



EMS TUG



TUG "EMS TUG"

call sign : C Q W M
builders : Jadewerft Wilhelmshaven GmbH, 1958

classification : GL + 100 A5 M E TUG + MC
date of class : Nov. 2010
IMO no. : 5067168

tonnage : 159 GT, 47 NT
length o. a. : 29,74 m
length b. p. : 27,23 m
moulded breadth : 7,52 m
depth of maindeck : 3,84 m
draft : 3,0 m
speed : 11,0 kn
bollard pull : 20,0 to

propelling machinery : 1 KHD Diesel, type SBV 8M 545, 1.600 IHP
1 propeller, Kort Nozzle rudder

auxiliary engines : 1 KHD Diesel, type F 2M 417, 18 kW
1 Valmet Diesel, type 311 DGM, 31 kW
2 generators, each 15 kW, 210 V

equipment : magn. compass with aut. steering gear, 2 VHF units
echo sounder, GPS navigator, Navtex, mobile phone
guest rope winch, fire pump (60 m³ / h)