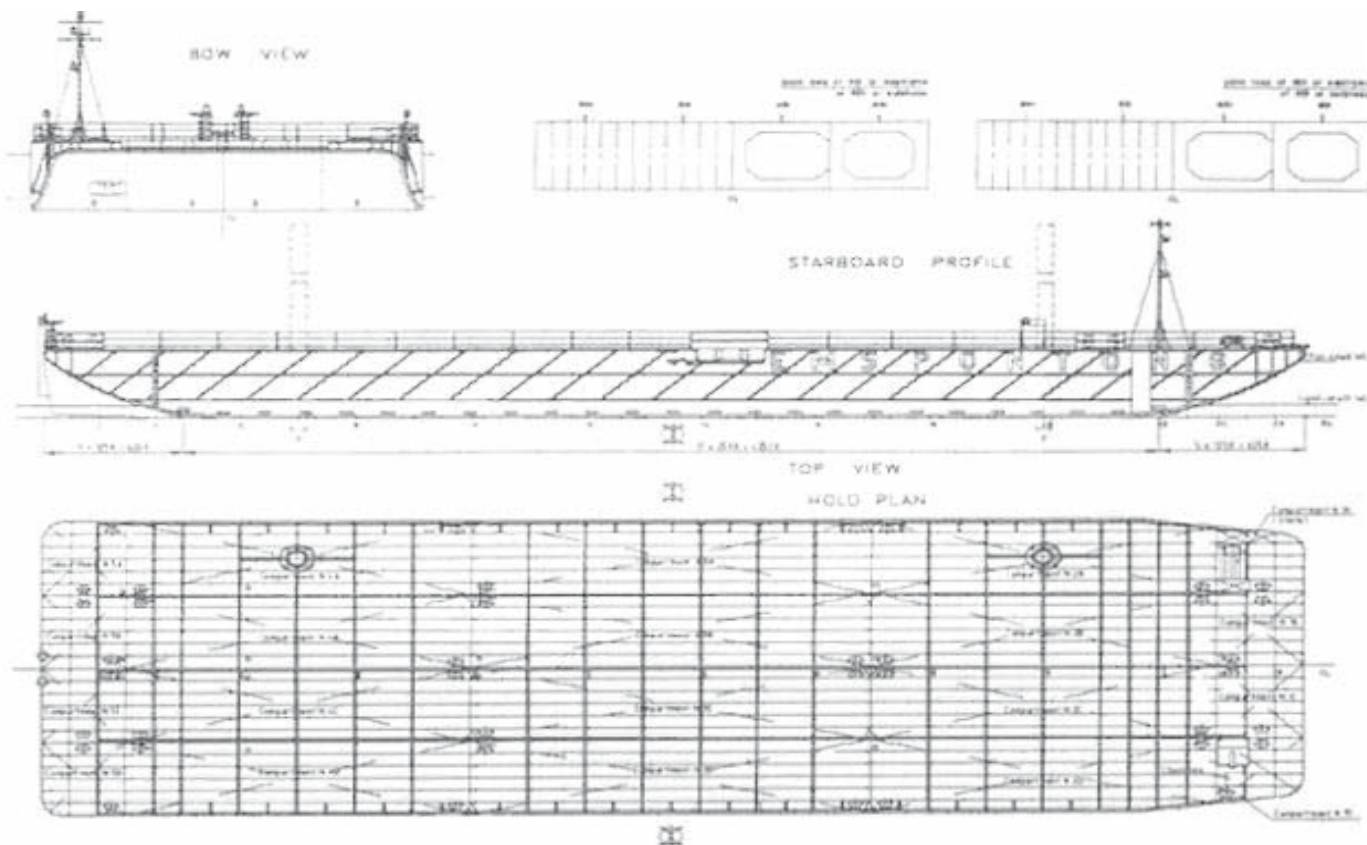




EMS OFFSHORE SERVICE



EMS PONTON 6



EMS PONTON 6

PRINCIPAL DIMENSIONS:

Length over all : 55,25 m
Length : 52,59 m
Beam over all : 17,30 m
Depth moulded : 4,00 m
Ligth draft : 0,75 m
Loaded draft : 3,25 m
Built : 2000 Russia
Class : G. L. + 100 A5 deep sea
Tonnage : 921 GT / 276 NT

CAPACITIES:

Deadweight : 2286 to
Deckload : 10 to/ m2
Wheel load : 12 to at 10 bar
Point loads : 60 to at webframes
: 80 to at bulkheads
: 200 to at bulkhead cross

2 spud trunks at port side forward & aft, (with flush covers)

2 spuds, diameter 700 mm, length: 18,00 m

4 Ro Ro ramps: L: 12,00 m, B: 4 x 1,5 m = 6 m

In total 58 lashing eyes, SWL 49 tons

ARRANGEMENT & FORM:

Bow : Raked, Ro Ro conection
Stern : Raked with 2 skegs, 2 pushpipes aft.
Bulkheads : 3 longitudinal, 4 transverse
In total 20 compartments of which 19 can be used for ballast water.
Each compartment with 2 covers, deckplug & sounding pipe.
One compartment for chainlocker (Stb)
One compartment for storage (PS)

Deck completely flush.

Removable railing around.

Removable signal mast and anchor winch.

Position & stern lights : Gas

MOORING & TOWING:

Anchor : H.H.P. 347 kg

Anchor chain : 151 m, 20,5 mm K2

Anchor winch: Manual / with warping head

Towing arr. : 2 smith brackets & fairleads

Bridle : 2 x 12 m steel wire

Bollards : Double bollards fore & aft.

Double bollards flush at fr. 14/15