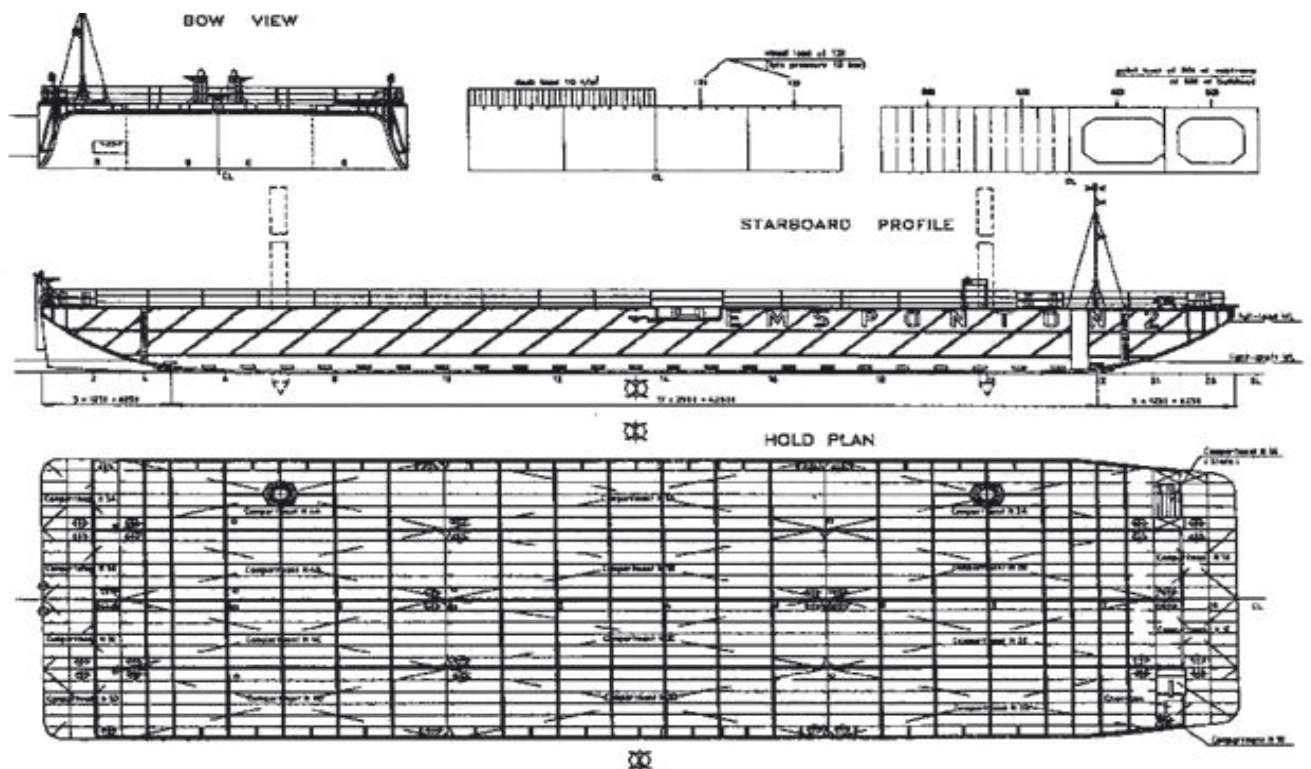




# EMS OFFSHORE SERVICE



## EMS PONTON 2



# EMS PONTON 2

## **PRINCIPAL DIMENSIONS:**

Length over all : 55,25 m  
Length : 52,59 m  
Beam over all : 17,30 m  
Depth moulded : 4,00 m  
Ligth draft : 0,75 m  
Loaded draft : 3,25 m  
Built : 2000 Russia  
Class : G. L. + 100 A5 deep sea  
Tonnage : 921 GT / 276 NT

## **CAPACITIES:**

Deadweight : 2.286 to  
Deckload : 10 to/ m<sup>2</sup>  
Wheel load : 12 to at 10 bar  
Point loads : 60 to at webframes  
: 80 to at bulkheads  
: 200 to at bulkhead cross

2 spud trunks at port side forward & aft, (with flush covers)  
2 spuds, diameter 700 mm, length: 18,00 m  
4 Ro Ro ramps: L: 12,00 m, B: 4 x 1,5 m = 6 m  
In total 58 lashing eyes, SWL 49 tons

## **ARRANGEMENT & FORM:**

Bow : Raked, RoRo conection  
Stern : Raked with 2 skegs, 2 pushpipes aft.  
Bulkheads : 3 longitudinal, 4 transverse  
In total 20 compartments of which 19 can be used for ballast water.  
Each compartment with 2 covers, deckplug & sounding pipe.  
One compartment for chainlocker (Stb)  
One compartment for storage (PS)

Deck completely flush.  
Removable railing around.  
Removable signal mast and anchor winch.  
Position & stern lights : Gas

## **MOORING & TOWING:**

Anchor : H.H.P. 347 kg  
Anchor chain : 151 m, 20,5 mm K2  
Anchor winch : Manual / with warping head  
Towing arr. : 2 smith brackets & fairleads  
Bridle : 2 x 12 m steel wire  
Bollards : Double bollards fore & aft.  
Double bollards flush at fr. 14/15